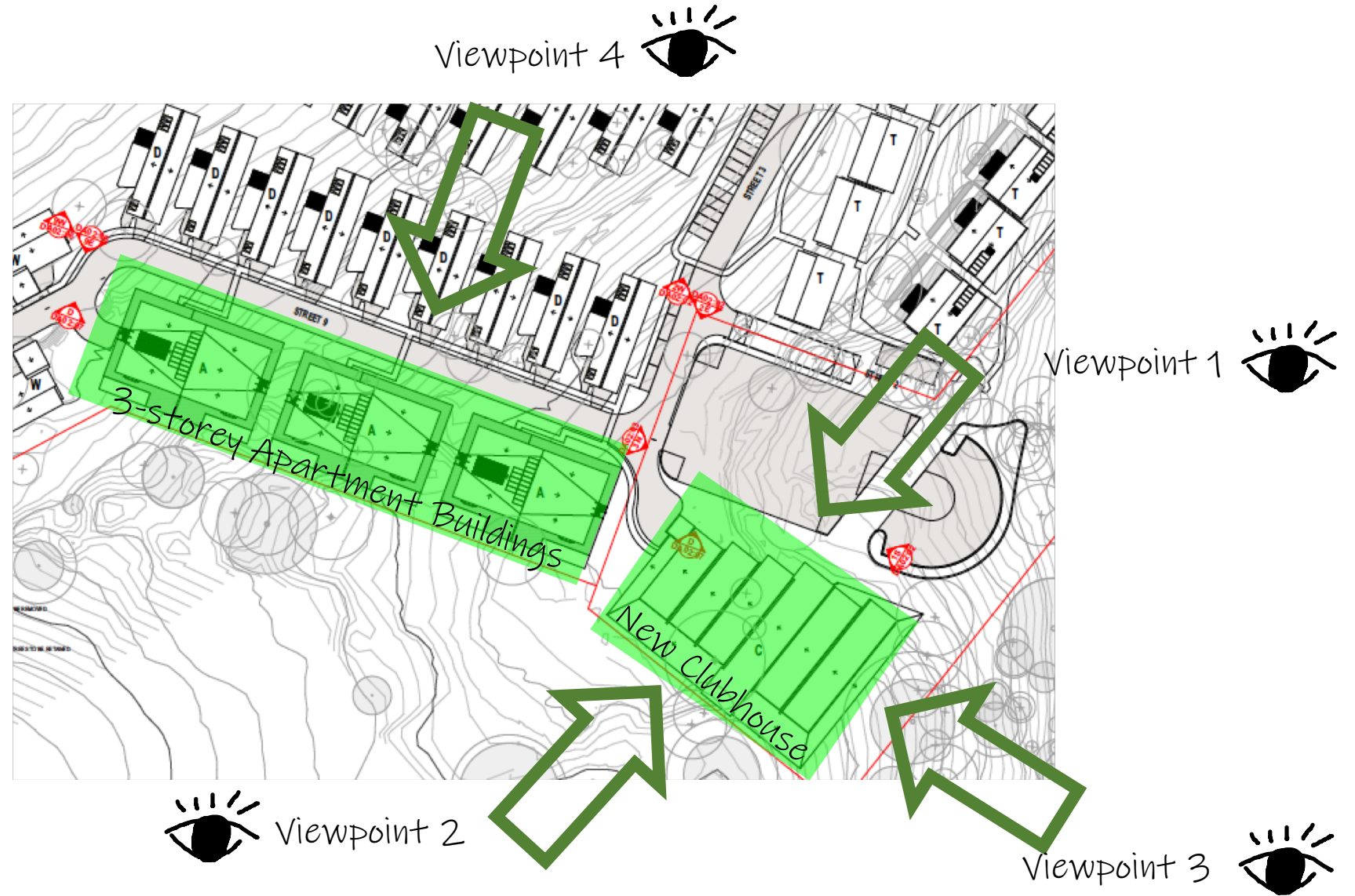


Clubhouse and Apartments Viewpoints

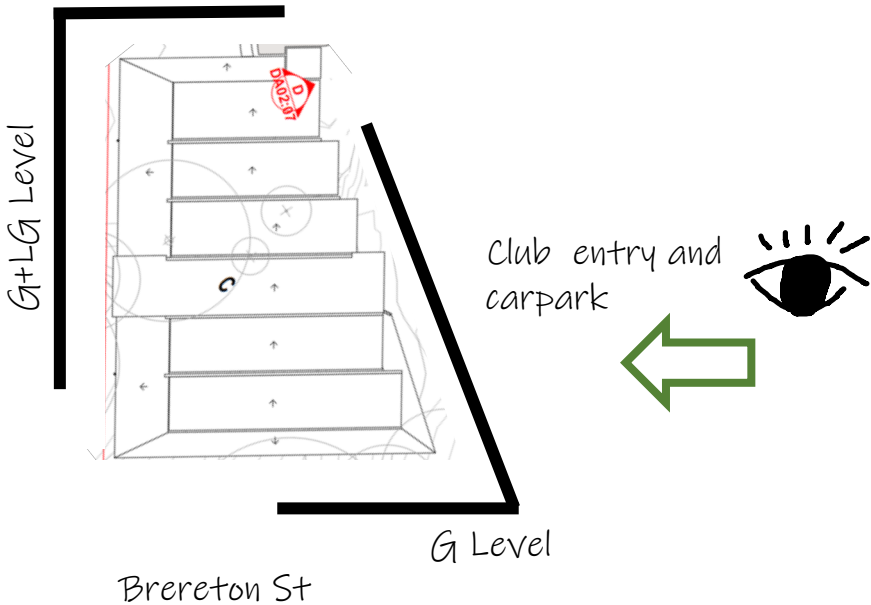


Viewpoint 1 – West Facing

(from clubhouse entry and carpark)



Golf course



View

Brereton St

Single-storey
Elevation

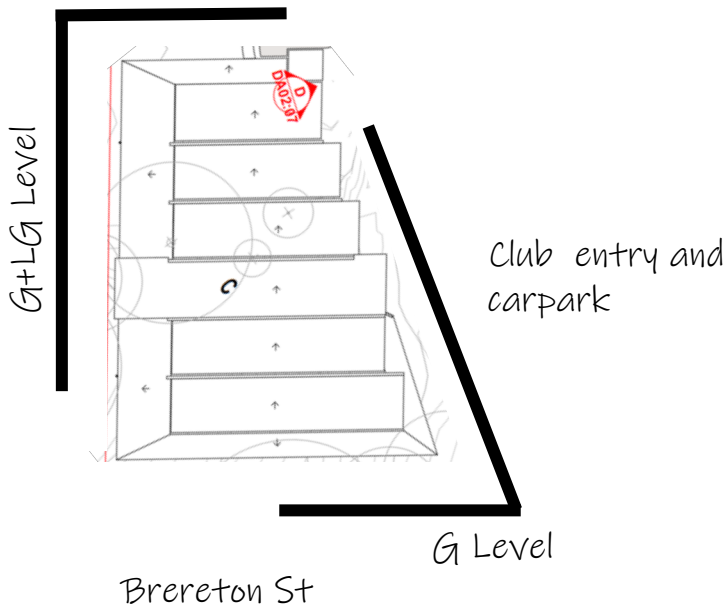


Viewpoint 2 - East Facing

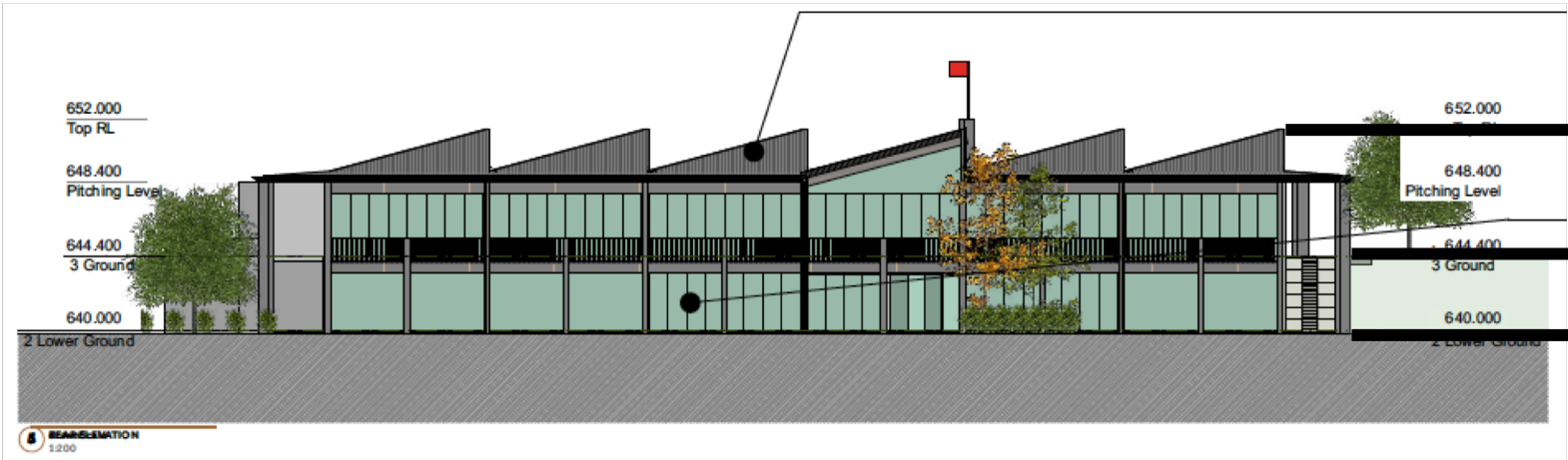
(from golf course)



Golf course



View



G Level

LG Level

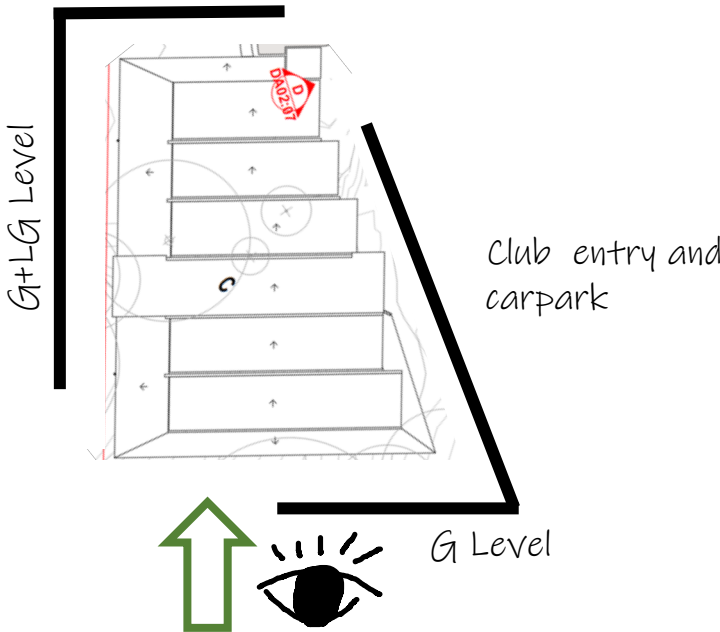
Brereton St

Viewpoint 3 – North Facing (1/2)

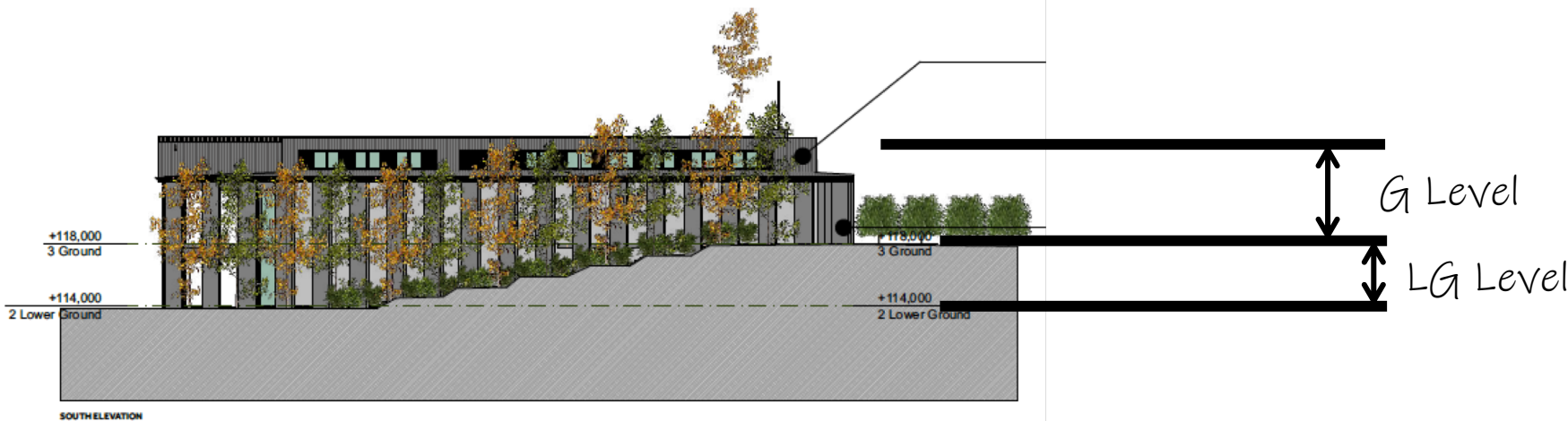
(from Brereton St)



Golf course



View

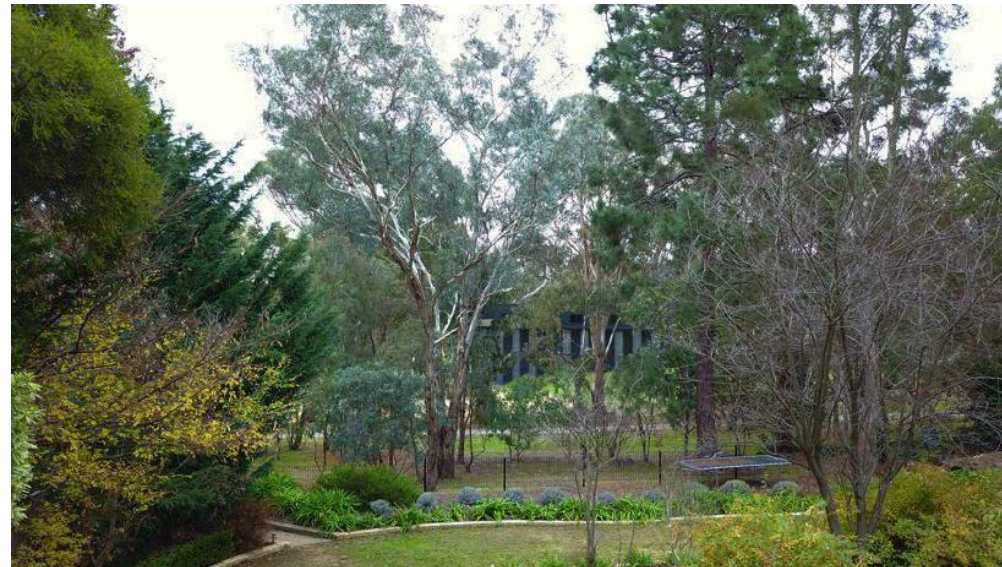


Viewpoint 3 – North Facing (2/2)

(from Brereton St)



BEFORE
view



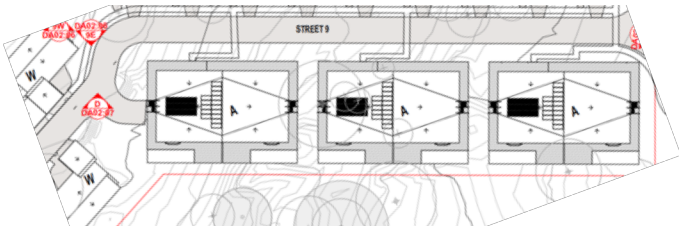
AFTER
view

1. Vegetation screening will remain;
2. Additional planting to be completed;
3. Vertical articulated building replicates the verticality of current woodland screening

Viewpoint 4 – West Facing



Detached houses



Golf course

Towards clubhouse
and Brereton St



View

← Towards clubhouse and Brereton St

Setback
third storey →
Two storeys →

